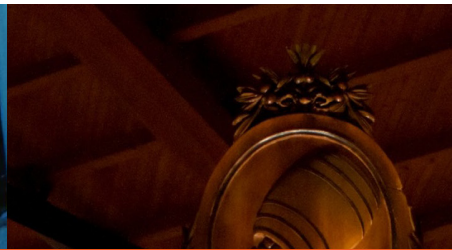




NetCommWireless

NTC-6200

3G M2M ROUTER



3G M2M Router Series

The **3G M2M Router series (NTC-6200)** delivers state-of-the-art M2M connectivity to a broad range of applications. The all-new 6200 series brings together the choice of 3 powerful gateways with different connectivity options so you can choose the best gateway to suit your individual requirements. Designed with durability, ease of use and added intelligence, the 6200 is designed to utilize the freedom of wireless networks to deliver seamless M2M connectivity.

BUILDING AUTOMATION



- Air-conditioning
- Security / surveillance
- Lift management

SMART CITIES



- Energy management
- Smart homes
- Utilities



BUSINESS SERVICES



- Point-of-sale
- Vending machines & kiosks
- Digital signage

HEALTHCARE



- At home healthcare
- Mobile health units
- Emergency response

ASSET MANAGEMENT



- Irrigation control
- Remote equipment management
- Transportation

FEATURES



Power over Ethernet (PoE) for a simple powering option*






Intelligent, 8 tri-Colour LED display for clear, easy to read modem status information



Flexible mounting suitable for residential, commercial or industrial applications with built-in wall mount and DIN rail mounting options



Innovative polycarbonate case with ruggedized rubber end caps for deployment in harsh and unmanned locations

Model	NTC-6200-01/11		NTC-6200-02/12		NTC-6200-03/13	
						
PoE	✓					
Ethernet	✓		✓			✓
ZigBee	✓					
Serial RS232/422/485	✓		✓			✓
USB	✓		✓			✓
GPS	✓		✓			
I/Os x 4	✓		✓			
Software Development Kit	✓		✓			✓
Open Linux Platform	✓		✓			✓
Bands	3G UMTS/HSDPA/HSUPA: 800/850/900/2100/1900 MHz 2G GSM/GPRS/EDGE: 850/900/1800/1900 MHz					
	NTC-6200-01	NTC-6200-11	NTC-6200-02	NTC-6200-12	NTC-6200-03	NTC-6200-13
Compliance	FCC, IC, PTCRB, CE, GCF, A-Tick, E-Mark	JATE/TELEC	FCC, IC, PTCRB, CE, GCF, A-Tick, E-Mark	JATE/TELEC	FCC, IC, PTCRB, CE, GCF, A-Tick, E-Mark	JATE/TELEC
Cinterion Module	PHS8-P	PHS8-J	PHS8-P	PHS8-J	PHS8-P	PHS8-J



ZigBee*



GPS**



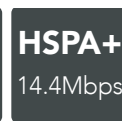
Software Development Kit



PoE* Ethernet x1



RS232/422/485



3G / HSPA+



Device Management



x 3**



USB 2.0 OTG

* Only available on NTC-6200-01/11

** Only available on NTC-6200-01/11 & NTC-6200-02/12

About **NetComm Wireless**

NetComm Wireless Limited (ASX:NTC) is a leading developer of innovative broadband products for telecommunications carriers and ISPs worldwide. Specialising in fixed and mobile broadband technologies, NetComm Wireless customises products to successfully deliver the performance capabilities of world-leading carrier networks to home, business and industrial applications.

Customer premises Equipment (CPE) and Edge technologies are specifically designed to extend a reliable connection to fringe service areas globally. For 32 years NetComm Wireless has engineered a solid portfolio of world-first data communication products and is today a world renowned developer of HSPA+, LTE, machine-to-machine (M2M) and fibre access devices. Headquartered in Sydney, Australia, NetComm Wireless has offices in the U.S., Canada, U.K., New Zealand and the Middle East.

For more information about NetComm Wireless visit:

www.netcommwireless.com



NETCOMM WIRELESS LIMITED ABN 85 002 490 486

Head Office, 18-20 Orion Road
Lane Cove, Sydney, NSW 2066, Australia

p: +61 2 9424 2000 f: +61 2 9424 2010
e: sales@netcomm.com.au w: www.netcomm.com.au