

---

# MultiConnect™ AW

## Analog-to-Wireless Converter



## Quick Start Guide



### MultiConnect™ AW Quick Start

MT200A2W, MT200A2W-C1  
82100572L, Revision C

This publication may not be reproduced, in whole or in part, without prior expressed written permission from Multi-Tech Systems, Inc. All rights reserved.

**Copyright** © 2011 by Multi-Tech Systems, Inc.

Multi-Tech Systems, Inc. makes no representations or warranty with respect to the contents hereof and specifically disclaims any implied warranties of merchantability or fitness for any particular purpose.

Furthermore, Multi-Tech Systems, Inc. reserves the right to revise this publication and to make changes from time to time in the content hereof without obligation of Multi-Tech Systems, Inc. to notify any person or organization of such revisions or changes. Check Multi-Tech's Web site for current versions of our product documentation.

### Record of Revisions

Revision	Date	Description
A	05/05/11	Release version
B	05/06/11	Add exclamation warning diagram to back panel.
C	08/31/11	Add the -C1, Sprint Version.

### Trademarks

Multi-Tech and the Multi-Tech logo are registered trademarks of Multi-Tech Systems, Inc. MultiConnect is a trademark of Multi-Tech Systems, Inc. Windows is a registered trademark of Microsoft in the U.S. and other countries.

**Online Support Portal:** To Create an account and submit a Support Case on the portal, visit <https://support.multitech.com>

**Knowledge Base & Support Services:** [www.multitech.com/support.go](http://www.multitech.com/support.go)

### Warranty

Warranty information can be found at: <http://www.multitech.com/warranty.go>

### World Headquarters

Multi-Tech Systems, Inc.

2205 Woodale Drive

Mounds View, Minnesota 55112

Phone: 763-785-3500 or 800-328-9717

Fax: 763-785-9874

Internet Address: [www.multitech.com](http://www.multitech.com)

### Technical Support

#### Country

Europe, Middle East, Africa  
U.S., Canada, all others

#### By Email

support@multitech.co.uk  
support@multitech.com

#### By Phone

+(44) 118 959 7774  
800-972-2439 or  
763-717-5863

## Introduction

This guide shows you how to set up your MultiConnect AW Analog-to-Wireless Converter. For detailed information, product description and specifications, refer to the User Guide. Check the Multi-Tech web site for current versions of our product documentation.

## Safety

### Dial Port Caution



The dial port is **not** designed to be connected to a Public Telecommunications Network (PSTN/phone line) or used outside the building.

### RF Safety

The remote modems are cellular devices. It is important to follow any special regulations regarding the use of radio equipment due in particular to the possibility of Radio Frequency (RF) interference.

**Caution:** A separation distance of at least 20 cm must be maintained between the modem transmitter's antenna and the body of the user or nearby persons. The modem is not designed for or intended to be used in portable applications within 20 cm of the body of the user.

Check your local standards regarding safe distances, etc.

- Operation of a cellular modem close to other electronic equipment may also cause interference if the equipment is inadequately protected. Observe any warning signs and manufacturers' recommendations.
- Different industries and businesses have their own restrictions governing the use of cellular devices. Please observe the local restrictions of the environment where you intend to operate the cell modem.
- Under no circumstances should antenna be placed outdoors.

## Handling Precautions

All devices must be handled with certain precautions to avoid damage due to the accumulation of static charge. Although input protection circuitry has been incorporated into the devices to minimize the effect of

this static build up, proper precautions should be taken to avoid exposure to electrostatic discharge during handling and mounting.

### Package Contents

- 1 MultiConnect Converter
- 1 antenna
- 1 RS232 cable
- 1 power supply
- 1 Quick Start Guide

#### Notes:

- If you are mounting the unit to a flat surface, you must supply mounting screws.
- If required, your wireless provider will supply the SIM card.

### Account Activation for Wireless Devices

Please refer to Multi-Tech's Cellular Activation Web site at <http://www.multitech.com/activation.go> for information on activating your cellular modem. On the Cellular Activation Web site, click on the down arrow in Select Your Product and select MT200A2W from the pull down listing.

### Insert SIM Card into Holder

The MultiConnect requires the power supply connection to begin operation. It also requires a SIM card (Subscriber Identity Module) to operate on a GPRS/GSM network. To install the SIM, do the following:

1. Open the SIM door by pressing down on the top of the door and prying open the door.

**Note:** When changing a SIM, ensure that power is removed from the unit.



2. Insert the SIM card into the card holder. The above figure illustrates the correct SIM card orientation.
3. Verify that the SIM card fits properly; then close the door.

## Connect the Antenna, Serial and Modem Cables, and Power



**Caution:** ⚠ The dial port is **not** designed to be connected to a Public Telecommunications Network (PSTN/phone line) or used outside the building.

1. Connect a suitable antenna to the ANT connector on the back of the unit.
2. Connect the DE9 connector (9-pin) of the RS232 cable to the COMMAND connector on the back of the unit and connect the other end to serial port on your PC.
3. Connect a RJ11 phone cable to the DIAL connector on the back of the unit and connect the other end of the phone cable to the customer's analog modem.
4. Remove the protective shipping cover. Attach the appropriate input connector to the power supply module by holding down on the slide lock and tipping the input connector to fit into the notch on top of the module and then lowering it into the slide lock. Then release the slide lock.



5. Screw-on the power lead from the power supply module to the power connection on the unit. Now, plug the power supply into your power source.

## Configure your MultiConnect

Before you start configuring your MultiConnect unit, you should have established a wireless network account. After you have established your wireless network account, you can log into your MultiConnect unit using HyperTerminal or an equivalent terminal emulation program.

## HyperTerminal

1. Go to **Start | All Programs | Accessories | Communications** and then **click** on **HyperTerminal**.
2. The New Connection screen is displayed. In the **Name:** window, enter an applicable name for your MultiConnect connection. Click **OK**.
3. In the Connect To screen, change the **Connect using:** window to the COM port for the MultiConnect. Click on the down arrow and select your COM port.
4. In the Com Properties screen, change default **Bits per second:** from 2400 to 115200. Click the **Apply** button and then **OK**.

## Login

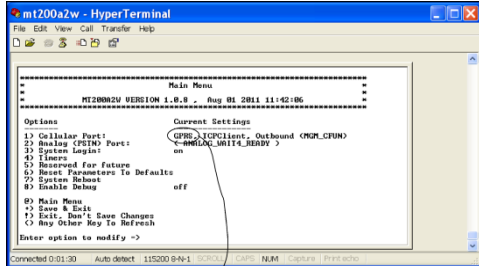
At the Login screen, enter the default password of **admin**

The Introduction Menu is displayed. A question is asked, **What would you like this port to do?** Enter Selection => \_ Enter **A** and press **ENTER**.

## Device Configuration

Connecting to your MultiConnect unit using either HyperTerminal or an equivalent terminal emulation program detects the configuration of the unit. The Main Menu will display either a GPRS on a MT200A2W unit or CDMA configuration on a MT200A2W-C.

1. The Main Menu displays either a GPRS for a MT200A2W or CDMA for a MT200A2W unit.

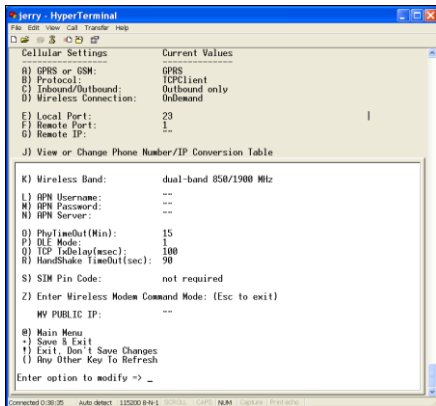


*Example of a GPRS and GSM Main Menu.  
For a CDMA Main Menu, this would show CDMA.*

2. Select option 1 and then go the Cellular Port Configuration for your unit.

## GPRS Cellular Port Configuration

1. The following options need to be configured for your GPRS cellular network.



## 2. Configure options B thru D for your GPRS cellular network.

<b>GPRS Network Dependent</b>		
<b>Option</b>	<b>Default</b>	<b>Description</b>
<b>B) Protocol</b>	TCPClient	Select either TCPClient, Telnet, UDP, or Pass Thru.
<b>C) Inbound or Outbound</b>	Outbound only	Outbound only. No other selection.
<b>D) Wireless Connection</b>	On Demand	Select either On Demand or Always On. ATTN: If Always On is desired, wait until you have made all your other configuration changes before selecting this option.

## 3. Options F and G are dependent on your local/remote port.

<b>Port Dependent</b>		
<b>Option</b>	<b>Default</b>	<b>Description</b>
<b>F) Remote Port</b>	1	The TCP/IP port that the remote device is listening on.
<b>G) Remote IP</b>	None	The IP address of the remote device on the network you are going to.

## 4. The Wireless Band is set depending on the region of the world the unit is set up for, e.g., 850/1900MHz for NAM.

<b>Wireless Band</b>		
<b>Option</b>	<b>Default</b>	<b>Selection</b>
<b>K) Wireless Band</b>	Dual-band 850-1900 MHz	This option is default depending on the region of the world the unit is being set up for, e.g., 900/1800MHz for Europe.  0) dual-band 850/1900 MHz 1) dual-band 900/1800 MHz



## 5. Configure options L thru N dependent on your APN.

APN Dependent		
Option	Default	Selection
<b>L) APN User Name</b>		The user name may not be required by all network providers.
<b>M) APN Password</b>		The password may not be required by all network providers.
<b>N) APN Server</b>		The APN assigned by your cellular network provider.

## 6. If required by wireless provider, enter SIM pin code.

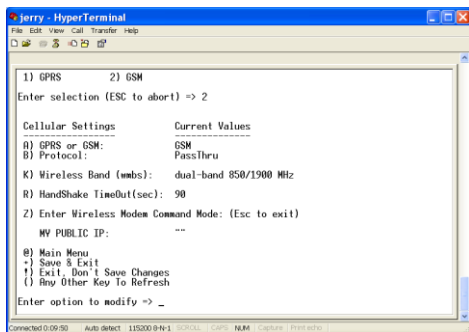
MultiConnect AW Security		
Option	Default	Selection
<b>S) SIM Pin Code</b>	Not required	If enabled, select option 2 and enter your pin code

## 7. Save your configuration by pressing the + key. Then return to the Main Menu and wait for the wireless and analog networks to become ready. The Current Settings will change to: (WIRELESS\_READY) (ANALOG\_READY).

Initial configuration of your GPRS version is complete.

## GSM Cellular Port Configuration

## 1. The GSM Cellular Port menu is displayed.



## 2. Configure your GSM network dependent options.

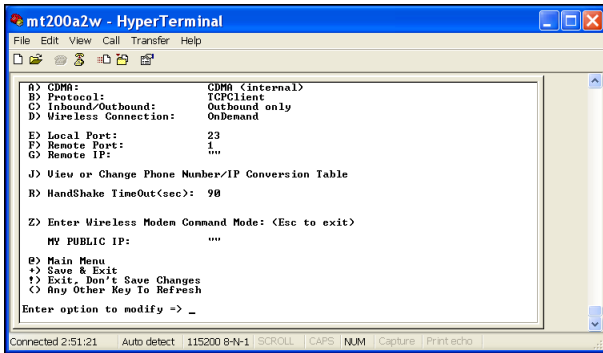
GSM network Dependent		
Option	Default	Description
A) GPRS or GSM	GPRS	Select GSM
B) Protocol	PassThru	No selection
K) Wireless Band	Dual-band 850-1900 MHz	This option is default depending on the region of the world the unit is being set up for, e.g., 850/1900MHz for NAM. 0) dual-band 850/1900 MHz 1) dual-band 900/1800 MHz

## 3. Save your configuration by pressing the + key. Then return to the Main Menu and wait for the cellular wireless network and the analog modem to change to a READY state. The Current Settings will change to: (WIRELESS\_READY) (ANALOG\_READ).

Initial configuration of your GSM version is complete.

## CDMA Cellular Port Configuration

## 1. The CDMA Cellular Port menu is displayed.



- Configure Option B (Protocol) for your CDMA cellular network.

<b>GSM network Dependent</b>		
<b>Option</b>	<b>Default</b>	<b>Selection</b>
<b>B) Protocol</b>	TCPClient	Select either TCPClient, Telnet, UDP, or PassThru

- Options F and G are dependent on your local/remote port.

<b>Port Dependent</b>		
<b>Option</b>	<b>Default</b>	<b>Description</b>
<b>F) Remote Port</b>	1	The TCP/IP port that the remote device is listening on.
<b>G) Remote IP</b>	None	The IP address of the remote device on the network you are going to.

- Save your configuration by pressing the + key. Then return to the Main Menu and wait for the cellular wireless network and the analog modem to change to a READY state. The Current Settings will change to: (WIRELESS\_READY) (ANALOG\_READY).

Initial configuration of your CDMA version is complete.

